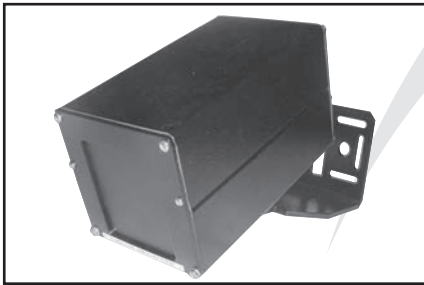




SENSORS & SWITCHES

SafePath™ ID20 Long Range Industrial Microwave Motion Sensor



Product Name SafePath™ ID20

Long Range Industrial Door
Microwave Motion Sensor

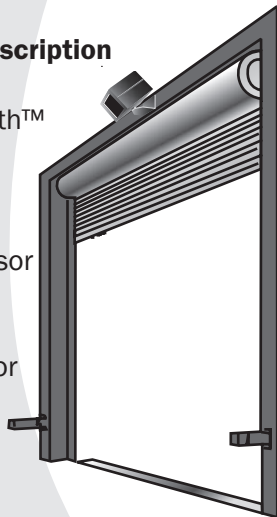
Manufacturer

MS SEDCO
8701 Castle Park Drive
Indianapolis, IN 46256
Phone: (800) 842-2545
(317) 842-2545
Fax: (800) 849-3387
(317) 849-3387
Email: custsvc@mssedco.com
www.mssedco.com

Product Description

BASIC USE
The SafePath™ ID20 is a long range microwave motion sensor designed to provide activation for industrial doors.

Microwave technology allows the ID20 to only detect motion in one direction (approach-only or depart-only) resulting in more efficient and economical door operation. It is capable of detecting larger



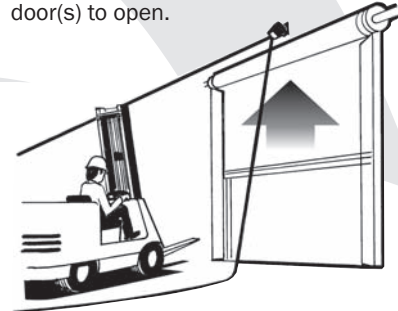
objects, such as fork trucks up to 60 ft. away. The ID20 can be mounted up to 20 ft. off the floor and has a maximum pattern size approximately 18 ft. wide at 60 ft. from the unit. The pattern is adjustable by turning a range potentiometer and aiming the unit. A speed selectable switch makes the ID20 capable of detecting pedestrians and/or vehicles.

The ID20 is unaffected by air motion, temperature, humidity, color or background variations. It is less expensive to install than loop detectors and is not susceptible to damage or malfunction from ice, salt and heavy vehicular traffic.

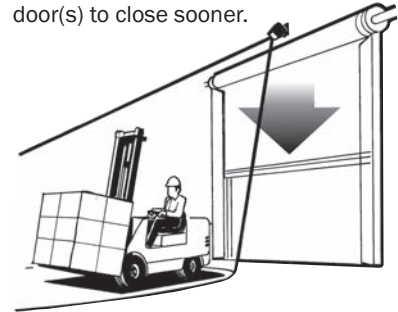
Technical Data

- Hands-free door activation
- Replaces loop detectors
- Heavy-duty, weather-proof aluminum enclosure
- Easy to set-up and install
- Long range (up to 60 feet)
- Outdoor/indoor use
- Responds to motion in only one direction—approach only or depart only
- Mounts up to 20 ft. high
- Use Safety Beams or Safety Sensors Where Appropriate
- Hold-open time delay (0.5 to 5 seconds)

Approaching traffic enters the detection zone. The ID20 signals the door(s) to open.



Departing traffic clears the hold open beam. The ID20 ignores departing traffic entering its zone, allowing the door(s) to close sooner.



SafePath™ ID20 Long Range Industrial Microwave Motion Sensor



SENSORS & SWITCHES

SPECIFICATIONS

<i>Model</i>	ID20
<i>Operating Frequency</i>	10.525 GHz
<i>Detection Method</i>	Doppler Shift Microwave
<i>Detection Pattern</i>	Adjustable
<i>Detection Angle</i>	Adjustable
<i>Directionality</i>	Switch Selectable—Approach Only or Depart Only
<i>Response Time</i>	0.25 seconds
<i>Speed Detection</i>	Switch Selectable >1 mph or >3 mph
<i>Hold Time</i>	0.5 to 5 seconds, adjustable
<i>Power</i>	12V to 24V AC or DC
<i>Current Consumption</i>	0.10 amps
<i>Relay Contacts</i>	Form C, rated at 3 amps
<i>Mounting</i>	Heavy-duty metal bracket with lockset
<i>Enclosure/Finish</i>	Black powder coated aluminum
<i>Temperature</i>	-35°F to 165°F (-37°C to 74°C)
<i>Physical Dimensions</i>	4"H x 4"W x 7"D
<i>Weight</i>	4 lbs.

APPROVALS

FCC

Installation

SETUP AND ADJUSTMENT

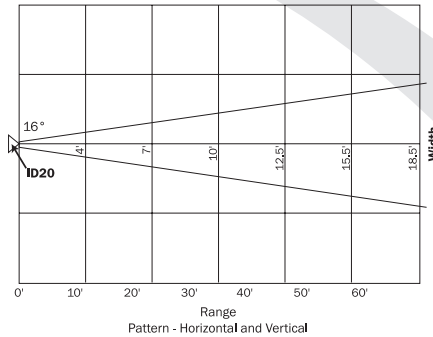
The ID20 Industrial Door Sensor's pattern is adjustable by turning

the range potentiometer mounted on the PC board and aiming the unit.

TYPICAL PATTERN DIAGRAM

Mounting Height: 12 ft.

Tip Angle: 16°



Detection pattern is approximately 18 feet wide by 60 feet deep.

(This detection pattern is approximate and will vary slightly. Walk-test the unit to assure the pattern desired.)

Availability & Cost

AVAILABILITY

Available internationally from manufacturer's authorized distributors; contact MS SEDCO for the location of nearest distributor.

COST

Cost information on MS SEDCO products is available from the manufacturer's authorized distributors.

Warranty

A one year warranty is available from the manufacturer covering defects in materials and workmanship. Contact MS SEDCO for details.

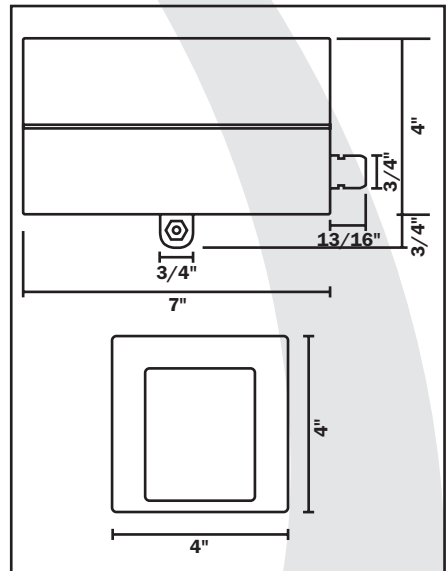
Maintenance

MS SEDCO recommends that all maintenance and adjustments be performed by a qualified technician.

Technical Services

MS SEDCO's staff of factory trained sales and service personnel offer design assistance and technical support. Local distributors are also available to assist in selecting appropriate devices for specific uses and to provide onsite installation.

DIMENSIONS



52006